

Cycas Lane-Poolei, Gardner n. sp.

An erect palm-like plant with a stout simple trunk of 10-12 feet, and 6-9 ins. diameter, the leaves forming a graceful drooping crown at the summit.

Leaves petiolate, quite glabrous; leaflets numerous, entire, linear, straight and acuminate with yellowish-brown tips, the midribs very conspicuous, the lamina flat, shining and dark green above, paler underneath, the upper leaflets decurrent to the next one below, the lowest not at all, or very slightly decurrent, the petiole armed with short stout spines which are arranged alternately through their entire length.

Male cones not seen.

Carpophylls petiolate, flattened, quite glabrous, bearing usually four ovules above the middle, the blade ovate-triangular, with two auricles or lateral basal lobes, the margins and apex toothed with sharp pungent spines.

31

Seeds ovoid-globular, hard and glabrous, yellowish-green, covered with a glaucous powder when young, and shining.

Leaves 60-76 cms. long; petioles 23-30 cms. long, and .6-.8 cm. broad. Spines .4 cm. long. Leaflets 10-13 cm. long, and .6 to 1.1 cm. broad.

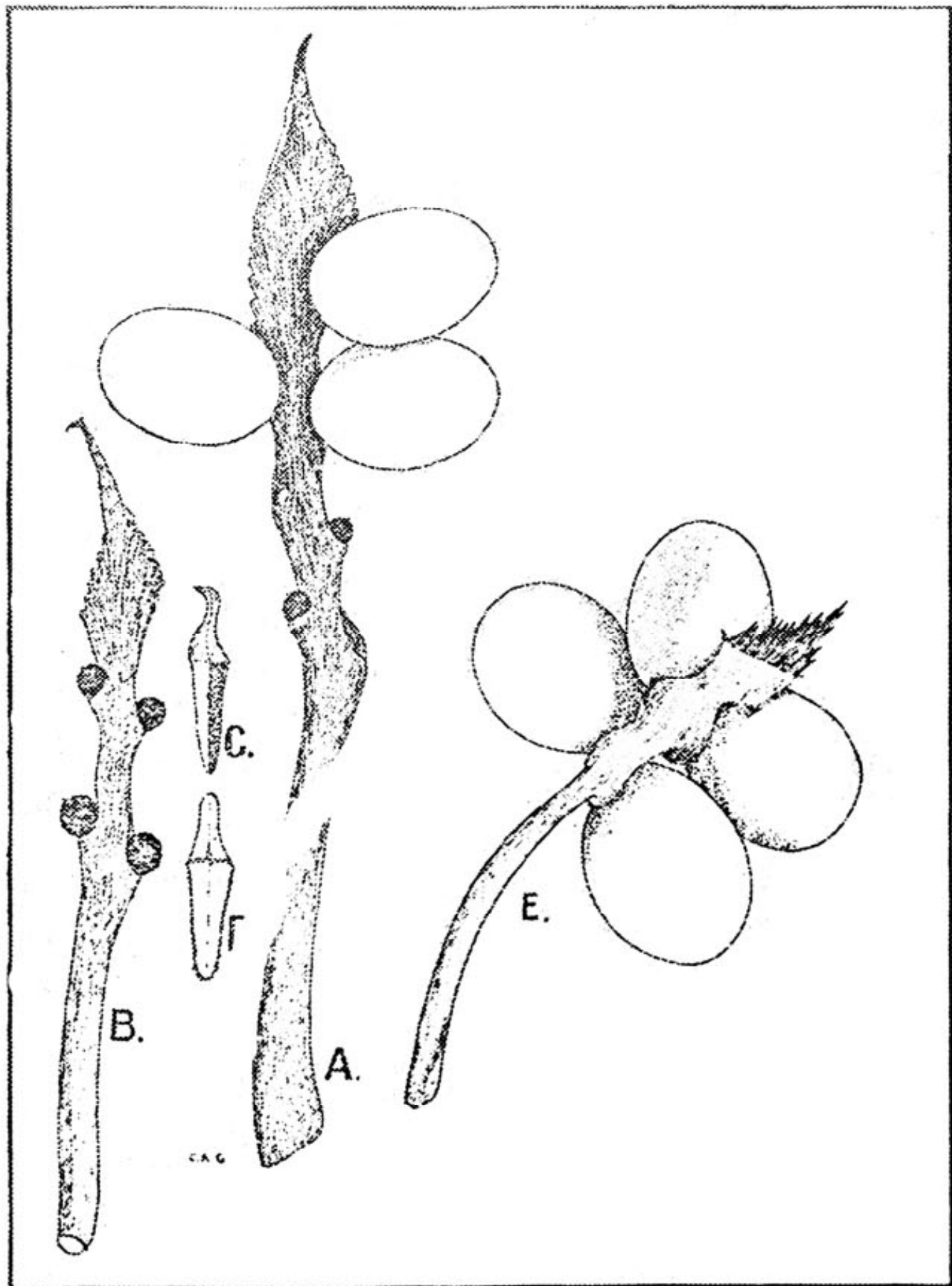
Carpophylls about 20 cm. long, and 1.27 cm. wide, blade 4.4 cm. wide, the apex 5 cm. long.

Seeds 5.7 cm. long, and 5 cm. diameter.

Found in the Kimberley district to the North-East of Mount Hann, near the source of the Moran River, on rising ground in sandy soil, forming open forests with *Eucalyptus latifolia* and *Eucalyptus spenceriana*. Fruiting in June and July.

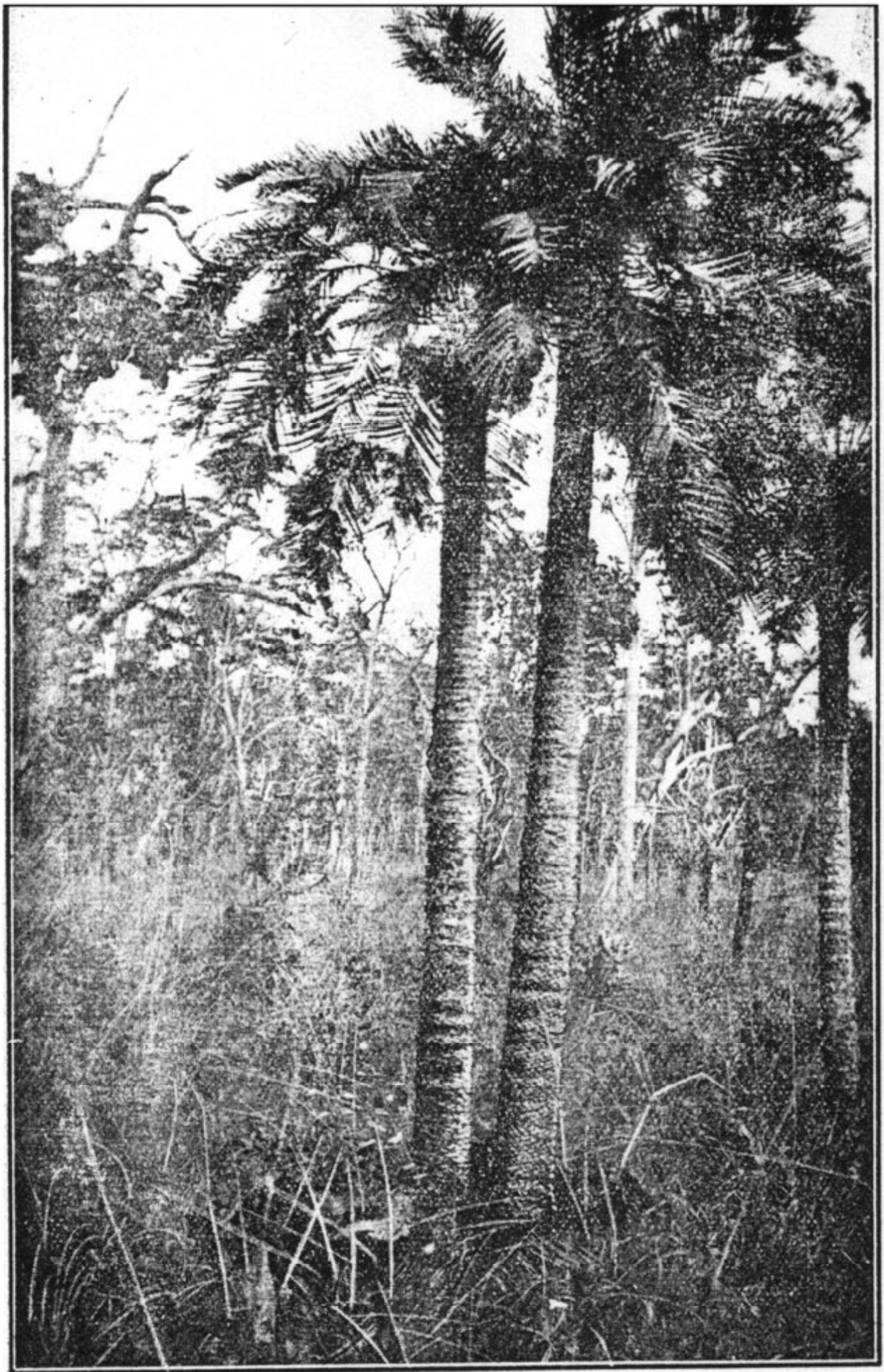
The type is No. 1444 of the Forests Department Herbarium.

This new species, which has no close affinities, is quite distinct in its being quite glabrous, and is intended to commemorate the name of Charles Edward Lane-Poole, the late Conservator of Forests in Western Australia. It was originally recorded from this spot by F. S. Brockman, the late Surveyor General, who reported its existence as a "fruit-bearing palm" while leading the Exploration Expedition of 1901.



CYCADACEAE.

A-D. *Cycas media*, R. Br. A. Mature carpophyll. B. Young carpophyll.
 C. Staminal scale. D. Same, seen from above. E. *Cycas Lane-Poolei*, Gardner.
 F. Staminal scale.



Cycad Palm (Cycas Lane-Poolei).